

Offchurch News

The Village Magazine

April 2013



Bluebells

April 2013

Mon	Tue	Wed	Thu	Fri	Sat	Sun
1	 2	3	4	5	6	 7
		 				
 	8	 9	10	11	12	 13
		  	 			 14 S
15	 	16	17	18	19	 21 
		 	 			
22	 	23	24	25	26	 27
		 	 			 28
29	 	30				
						

Village Hall Cleaning for April: Liz Varnish and Catherine Kaye



Offchurch News deadline. All notices for next month to offchurchnews@gmail.com or Nine Hills Cottage, Welsh Road by this date at the latest. Thank you.



Grey bin collection



Green bin collection



**Mobile Library Tudor Cottage 9.35am - 9.55am
Old Post Office 10.00am-10.20am**



Bell ringing practice, 7.30pm-9.00pm, Church Tower



Services in St Gregory's Church p. 5



Sunday School, St Gregory's Church p. 5



Family Service, St Gregory's Church p. 5



Prayer Group, 7.30pm-8.30pm, The Osier, Welsh Road



Upholstery and soft furnishings class, 9.30-11.30am, Village Hall p. 15



Afternoon Club, 2.30pm, Weston Village Hall p. 16



Village Hall Foundation AGM; Committee Meeting, 7.30pm, Village Hall pp. 7, 12 & 18



Cameo, 8.00pm, Village Hall p. 8



Offchurch Crafts, 7.30pm, Village Hall p. 8



Offchurch Garden Club, 7.30pm, Village Hall p. 18



Tennis Club Night, Offchurch Sports Club



Churchyard Working Group, 9.30am-12.30pm, Churchyard pp. 14-15



Reading Circle, 8.00pm, private home p. 21



"Afternoon Tea ... As It Used To Be", 3.00pm-5.00pm, Village Hall p. 17



Qigong class, 5.00pm-6.00pm, Village Hall p. 13



Pilates class, 5.45pm-6.45pm, 7.00pm-8.00pm, Village Hall

From the Vicarage

April is the month when Spring is supposed to come in full force! There are signs of new life everywhere – buds bursting, birds singing and nesting, despite the weather. It seems to me that St Gregory's churchyard is one of the first places to show signs of Spring, and I love it! This year April immediately follows Easter, and in our church services we think about the difference Jesus' resurrection has made. We do so in the context of several new beginnings in our church life – a new Archbishop of Canterbury, and a new Pope (who is being chosen at the time of writing). What is the likelihood of new life coming to the church?

There could have been no resurrection without a previous death. The new life that Jesus offers is a life that replaces the old life. The new life is life in a close relationship with God, a relationship marked by love, direction, pastoral care and support from God's side, and answered by love, obedience and trust from our side. The old life it replaces is life lived without that close relationship, in which we go our own way and keep God at a distance if anywhere – maybe making contact with God on occasions in order to obtain his help or blessing, but basically following our own agenda. The new life is part of God's agenda to bring transformation and fulfilment to the world he created; the old life is part of the problem. The new life is immortal; the old life is limited. That old life has to go in order to receive the new; what has gone wrong needs to be forgiven and put right, bad behaviour needs to be forsaken and new ways adopted.

Many of you will have heard that Offa House has closed, and the Diocese will have to decide what to do with it. I suspect it will be sold. It seems to me this is a kind of 'death' in some ways. But it may be that new life may come. Let us pray that it will.

If new life is coming to the church, there will have to be a proper 'death' to the old life. We are all too familiar with the scandals and horror stories that have spoiled the church in recent decades. (They probably spoiled the church in centuries before that, too, but did not come to light.) Many aspects of past church life are worth keeping, and can be as much part of the new life as of the old. But there is much to be put right, much to seek forgiveness for, much that will need simply to be discarded. The trouble is, those of us who have long been part of the church are so used to it we do not see what needs to be done. So if you can see it, please let us know! The new life Jesus offers is good news, the best news possible! We don't want to get in the way of it!

TIM BRITTON (812518 or email tim@thefeldongroup.org.uk)



April Church Diary and Rota

7 th	10.00am	Matins	Wardens/Vicky D.
10 th	8.00am	Holy Communion (1662) in Offa House	Tim
14 th	10.00am	Holy Communion with Sunday School	David
21 st	10.00am	Family Service	Marcia
28 th	10.00am	Holy Communion followed by APCM	Tim

A Message from Greta

On 5th March I had an operation and a short stay in Hospital. That coincided with the Queen's short stay in hospital. She hadn't been in hospital for 10 years, and I hadn't been in hospital for 45 years. (I was treated like Royalty in the Nuffield Hospital but that is where the similarity ends. My photograph was not splashed on the front page of every newspaper, and I did not depart from hospital fully made up wearing my pearls.)

Also ... my thanks to my friends and neighbours who sent me such lovely cards, and kept Lisa occupied dealing with the telephone enquiries.

I am happy to report that both the Queen and I are recovering well at home.

Greta Sollett



ST GREGORY'S MATTERS



Diane and Alan's final Sunday amongst us was marked by a particularly moving service, enriched by some touching music and readings. This was followed by a reception at Wethele Manor, where they were given a genuine "Feldon" farewell. That they will be missed goes without saying. However, it's hard to imagine that we won't, somehow, be seeing them again in the not too distant future.



Churchwardens look on, as Diane and Alan unwrap their farewell gifts.

Mothering Sunday: A welcome number of worshippers came along to this heart-warming celebration of family communion. Tim entertained us with a one-man ecclesiastical fashion show, graphically illustrating his Mothering Sunday message, and the children enthusiastically conveyed theirs by presenting sprays of spring flowers (thanks to Marcia) to mothers in the congregation.

Grave consequences: A recent survey of the churchyard gravestones found that three out of some 280 are in need of attention if they are to maintain their customary upright position ... The work is now in hand and Jane's risk assessment will soon be satisfied that anyone visiting a grave at St Gregory's will not encounter any undue hazard, or worse still, suffer an unthinkable, premature demise – the ultimate irony!

St Gregory – the man: *“Political corruption, public perversity, family breakdown, lack of civic virtue, widespread poverty and the total collapse of a culture and a civilization - a depressing scenario that describes, not 21st century Britain (on a good day), but Rome in A.D 590! Who would have believed it ... from Romulus and Remus and the Grandeur that was Rome, to this! – Pax Romana elbowed out by the self-interest of Carpe Diem ... 700 years of progress down the vomitorium plughole. So much for veni, vidi, vici, then.*

This, mercifully, was the year in which a humble monk was elected Bishop of Rome and consecrated **Pope Gregory 1st**. Literally thrust into this wretchedness (no white smoke theatricals), Gregory went on to reign for 14, quite remarkable, years. During this time he had an impact that was simply Uber-Christian, and by the time of his death in A.D 604 it was recognised that he had not only saved his people, his city and his country from impending annihilation, but the whole of Christendom. He had created a launch-pad for the richness of the Middle Ages and the subsequent wonders(?) of Western Civilisation. Pretty well deserved then, the title '**Gregory The Great**'. More pertinent perhaps, his own self-designated appellation – '*Servus servorum Dei*' (*Servant of the Servants of God*) - a revered, sacred distinction that became the exclusive Papal baton of honour, passed down through a long relay of Popes and now in the hands of Pope Francis. Given then, that we willingly adopt St Gregory's name for our humble little Church, we might, perhaps, pause a while to pay him respect by becoming a little more familiar with something of his life and unparalleled achievements.

A good place to start: http://en.wikipedia.org/wiki/Pope_Gregory_I

“The great gift of Easter is hope – Christian hope which makes us have that confidence in God, in his ultimate triumph, and in his goodness and love, which nothing can shake.” (Basil Hume)

David Varnish

Offchurch Village Hall Foundation

Everyone is very welcome to join us for the Annual General Meeting of the Offchurch Village Hall Foundation on Monday 8th April 2013 at 7.30pm, at the Village Hall. It is an opportunity to review the last year as far as the hall and the activities it hosts are concerned and to look at how it will continue to provide a focus for events in the village in the future. Please stay for a glass of wine afterwards.



Offchurch Crafts

**Tuesday 16th April 2013
7.30pm in the Village Hall**

This month's session will include a demonstration of needle felting, a very easy (and potentially addictive!) technique, and an opportunity to have a go at making a small item.

Subscription to the group is still only £10 for 6 months or £2.50 for a single session (includes coffee and biscuits!).

Everyone is welcome.

Janet (01926 425430)

Offchurch
CAMELO

**Tuesday 9th April 2013, 7.30pm
Charlecote Park**

The National Trust are generously opening the Victorian Kitchen at Charlecote Park for our meeting on 9th April. We will be talking about the equipment in the kitchen and also there will be a short demonstration of cooking on an open fire.

Please arrive at the main car park at Charlecote Park at 7.30pm, where you will find directions to get into the car park near the house.

All are welcome. If you want more information, please phone me on 01926 613543.

Jane Hedderwick

Offchurch 100 Club

February 2013

Dear All,

I hope to be able to run the 100 club again this year. It had to be cancelled in 2012 because of lack of support. This was felt by several people that I spoke to, to be partly due to the recession but mainly because it was just before Christmas. I am aiming to get the Club up and running as soon as possible in May.

So please can you either fill in the form below and return it to me at Hunters Lodge, Fosse Way, Offchurch, CV33 9BB or leave it at Valerie Graham's house, Gable House, Village Street. You may also e-mail me (johnmander992@btinternet.com) your intention to participate and I will be in contact to collect the form and money.

This simple way of fund raising will provide £1500 to be split between the Church and Village Hall and provides £1000 for prizes throughout the year. If I do not get 100 people to subscribe this time I intend to apportion the prize money pro rata to the number of participants.

Each subscription, which buys one number, costs £25 for the year and you can take out as many subscriptions as you like. Your number(s) are entered in the 10 draws which take place each month throughout the year with a chance each time to win one of three cash prizes of £50, £30 and £20.

Winning numbers will be published in *Offchurch News*.

I do hope I can count on your support and wish you luck in the draw - you could be one of our 30 fortunate winners!

John Mander

.....

OFFCHURCH 100 CLUB
2013 SUBSCRIPTION FORM

Name:

Address

Tel No.

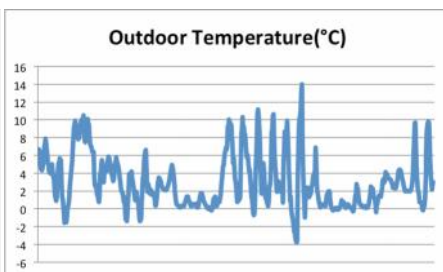
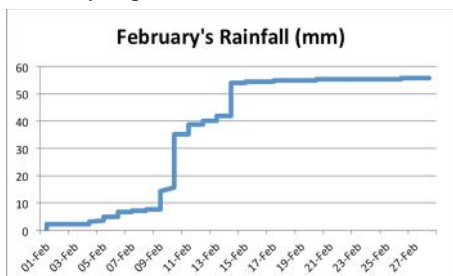
E Mail

Number of Subscriptions (£25 each)

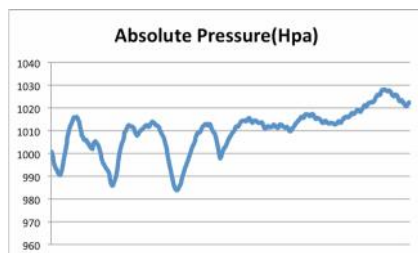
Cheques should be made payable to "OFFCHURCH 100 CLUB"

Offchurch Weather Watch - February 2013

February is such a short month, it seems to pass in a flash. The days are lengthening, if not yet getting any warmer as the seas around us are approaching their coldest. But the sun does have some warmth and as you can see from the chart, the daytime temperature reached 14°C on the 19th of the month. Overall though, February was a cold month; the average at 3.0°C was nearly a degree lower than in January. It was also a month of two halves. When we look at the rainfall, most fell in the first half with the 10th particularly wet. At a total of 58mm, it approached nearly twice our village average which is 36mm. Only 2011 exceeds this value at 61mm. We also experienced snowfall on several days. The second half was dry but cold, with frosts on many nights.



The pressure chart demonstrates the two halves well. The first half was wet and blustery with two deep lows, hence the high rainfall and some snow around the middle of the month. The second half was much more settled, but with generally lower temperatures.



Weather History and Culture – Ancient Beliefs

I suppose it's no surprise that people in ancient times believed that gods controlled the weather and in particular the sun, wind and rain. After all, the weather came from the heavens and that's where the gods lived. Ra, the Egyptian sun god, was usually depicted as travelling across the sky in a sun boat each day. Gods of thunder and particularly lightning were present in many cultures, and attracted a number of different names, including Zeus (Greek), Raiden (Japanese) and Indra (Hindu). Early people were very superstitious and fearful believ-

ing the gods could be appeased by offerings and rituals. These days the media weather forecasters take the blame!

RKS.

**The following press release was issued by the
Diocese of Coventry on 8th March 2013:**

It is with much regret that the Trustees of Offa House Limited have taken the difficult decision to close the House.

Offa House has been the retreat house in the Diocese of Coventry since 1962 and is known and loved by many people in and beyond its immediate locality. Being conscious of this fact has made the decision of the Trustees all the more difficult.

The fundamental issue is financial. Over the last two years the sales revenue has decreased by some 24% and as a result the company has been trading at a loss. Whilst the Trustees have been taking action to address this there has also been the need for significant capital expenditure. Old buildings can be very costly to maintain, and Offa House is no exception, the net result is that in the last two years the company's cash reserves have been depleted by in the order of one hundred thousand pounds.

Matters have come to a head in the last few weeks as it has become clear that further major capital expenditure is urgently required and it is this situation that has finally led the Trustees to conclude that there are no longer the financial resources available to allow Offa House to continue to operate. This decision has been taken with a heavy heart.

The Trustees are hugely appreciative of the work of staff (both past and present) and for the support of hundreds of people over the decades. They recognise that this news will come as a shock and a disappointment to many people.

The house will close on Friday 22nd March. Any bookings that are affected by this decision will be the subject of a full refund of deposits and, where possible, assistance will be provided in finding an alternative venue.

Any questions, requests or comments relating to this news should be sent to offa@covcofe.org



OFFCHURCH VILLAGE HALL FOUNDATION

Registered Charity No 511934

ANNUAL GENERAL MEETING

MONDAY 8th APRIL 2013 – 7.30pm – VILLAGE HALL

AGENDA

Apologies

Minutes of the Annual General Meeting – 22nd March 2012

Matters arising

Report of the Committee of Management

Presentation of accounts for the year ending 31st December 2012

Report of nomination of representative members of the Committee

Election of four elected members of the Committee

Appointment of Verifier

Any other business

All inhabitants of the Parish of Offchurch (18 years and upwards) are entitled to vote. Nominations for elected members of the Committee may be submitted, prior to the meeting. Nominees must have signified their willingness to stand for election.

Contact Liz Varnish on 01926 886119 or email ldvarnish@gmail.com

Do come along and find out what we do. Why not stop for a glass of wine and a chat after the meeting? You would be very welcome.

Village Hall Bookings

!! It's no April Fool's joke !!

On 1st April, the way in which you can book the Village Hall for your event or meeting changed.

By telephone: 07943 556133
By email: villagehall@offchurch.org.uk
Online: www.offchurch.org.uk/village-hall

Bookings secretary: Mo Chivers

Have you had a look at the new village hall website yet?

As well as some video footage which takes you on a tour of the hall, you will also find a calendar showing the availability for booking either the large or the small hall.

If you have made a booking, a few days before the date of your event Mo will contact you with a keypad code which will enable you to gain entry to the hall.

Many thanks to Mary Gunthorpe and Margaret Hinksman who have now retired after managing the bookings arrangements for the past 11 or so years. They made a splendid team, offering a friendly and helpful service to everyone who called to enquire about hiring the hall. The number and range of bookings greatly increased during their years in charge and the Committee has very much appreciated and valued their dedicated service.

Kate Sargent
Chairperson

Offchurch Village Hall Foundation



St Gregory's - A Sanctuary for Wildlife

There are generally some warm days at the end of March or beginning of April, which bring the blackthorn into bloom, and which are followed by a cold period called the Blackthorn Winter.

Beware the Blackthorn Winter.

These are famous weather sayings. The blackthorn flowers on average in the first week of April in the Midlands. I did see some out at the end of last month in Shropshire. Of course, it will be earlier in Cornwall, etc. The first maxim refers to a warm spell in late March and early April which was tested 27th March to 5th April. Average figures of 53% were returned for three or more consecutive warm days. Similar conditions were applied to the 6th-12th April for a cold spell falling after a warm 27th March to 5th April; only 31% was shown. The Blackthorn Winter appearing in its own right failed miserably at 21%. Not to put too fine a point on it, we all know it can be jolly cold end of March into April and I don't think we should put all the blame on the blackthorn, it's very pretty anyway.

And pretty too is our churchyard. It must be the best show of spring bulbs for many a year. The wild crocus are everywhere, they did look very unhappy after some cold rain last month; I thought they were finished. But no, up they came again and opened in the warmth of the sun later. The cold weather has been very good for the snowdrops; they have gone on and on. Nice to have seasonal weather, really. A bit of proper winter which hopefully will bring us a bit of proper summer. It looks like the primroses have multiplied, even getting where we don't really want them, around the cremation plaques. Yes I know, stop complaining, you say.

I'm hoping that when you read this, we will have made the first cut with the mowers. Dave started all the mowers except one - the small Mountfield, when we met in the middle of March. You may remember that last year we were caught out by early fine weather and only two of the mowers started. This year we were ready. Thanks Dave.

Did you see the report in the Bulletin on the 17th March about "monitoring endangered wild life in churches"? I think they meant churchyards, 'cos it wasn't bats in the belfry. It was hedgehogs. The

British Hedgehog Preservation Society have called on the Church of England to support a new survey looking at the decline of the hedgehog. Now we haven't seen ours yet this spring, so please, keep a look out. We have a hibernation box but don't look in it so as not to disturb Henry or Henrietta. They should be awake by now. I'll let you know what we find in due course.

One man went to mow, well I hope not. Five or six including ladies went to mow perhaps. How about Saturdays 13th and 27th April, 9.30am until 12.30pm? Okay then, thanks. Coffee at 11.00am 'ish.

Mike Porter



Upholstery Classes

The upholstery classes restart on Tuesday 16th April from 9.30am until 11.30am, at the Village Hall.

Love Ballet
Dance Company

Ballet Lessons

Tuesdays, The Grange, Southam

- 4.00pm - Prima Ballerinas (3-4yrs)
- 4.30pm - Pre-Syllabus (5-6yrs)
- 5.00pm - Pre-Primary (7-8yrs)
- 5.45pm - Primary (8yrs+)

Dance Classes

Thursdays, The Grange, Southam

- 4.00pm - Funky Dance 1 (4-6yrs)
- 4.30pm - Gymnastics (all ages)
- 5.00pm - Grade 1 Ballet (9yrs +)
- 5.30pm - Funky Dance 2 (7yrs +)
- 6.00pm - Grade 2 Ballet (11yrs+)
- 6.45pm - Grade 3 Ballet (13yrs+)

Tap Lessons

Fridays, The Grange, Southam

- 4.00pm - Little Tappers (3-5yrs)
- 4.30pm - Pre-Primary Tap (6-8yrs)
- 5.00pm - Primary Tap (8-10yrs)
- 5.30pm - Grade 1 Tap (10yrs+)

Limited places available - FREE TRIAL CLASS

Call Lorraine 07711 010404 - www.loveballet.co.uk - lorraine@loveballet.co.uk

AC WINDOW CLEANING

Regular, reliable and reasonable

Please call or email today for a quotation

References in Offchurch and surrounding areas upon request

Telephone: 01926 258068

Mobile: 07588 681823

Email: alcwindows@gmail.com

Website:
<https://sites.google.com/site/acwindowcleanerscouk/>

Twenty-eighth year...

Mike's Birthday Jazz Concert

for Christian Aid
with

Tierra Buena New Orleans Jazz Band

Thursday 16th May 2013

St Gregory's Church

Offchurch Nr Leamington Spa CV33 9AS

8.00pm till 10.30pm

Tickets £6.00 Phone 01926 624909

Wine and refreshments free



Afternoon Club

Monday 8th April, Weston Village Hall

This month, we are guests of Weston Club, and the talk will be on Guide Dogs for the Blind. I do hope we have a Guide dog there. Members will be contacted regarding transport for that afternoon and we hope all members will be able to go – and that it will be warmer by then.

Greta (01926 429990) and Valerie (01926 423677).

Welcome

A warm welcome to Jack Blackwell, who has moved into The Nest. We hope that he will be happy living in Offchurch.



*“Afternoon Tea ----- As It
Used To Be”*

With live music

by The Broadway Trio

at

Offchurch Village Hall

on Sunday 21st April 2013

3.00pm - 5.00pm

£5

Children’s Teddy Bears Picnic

on the field – Free

In aid of Rufus’ Friends’ Fund



Offchurch Garden Club

The next meeting will take place on Monday 29th April 2013 at 7.30pm at the Village Hall. Topic: *Courtyard Gardens*. Speaker: Adrian James. There will be a members' sale table.

For further information, please contact Mo Chivers on 01926 613477 or e-mail mo@crisford.net.



Village Hall Notices

AGM

The AGM will take place on **Monday 8th April 2013** at 7.30pm, at the Village Hall. It will be followed by a glass of wine. Everyone welcome.

Village Hall Committee

The next meeting of the Village Hall Committee will be on **Monday 15th April 2013** at 7.30pm in the Hall.

Village Hall Bookings

See separate insert on p. 13.

Village Hall Cleaning

On the rota for April: Liz Varnish and Catherine Kaye

THE TEETH ARE BITING BACK IN EATHORPE

Saturday, 27th April at 8.00pm

The Dr. Teeth Big Band are coming back to Eathorpe with their ultimate good-time dance and party mix: blues-swing-jazz-rhythm and blues-50s rock and roll-jump/jive-ska music. Still destined to save your mortal soul, they just get better and better. The set will include a retrospective of songs played throughout their career from the London 2012 Olympics, tours around the rest of the UK, other countries in Europe, and the USA.



The 8-piece band includes the following ingredients:

- 1 large dollop of **Quentin** “G-String” **James** on guitar and Backing Vocals
- 1 whole **Benny** “The Bullfrog” **Benson** on Bass and Backing Vocals
- 2 tbsp chopped **Tasha** “Boom-Boom” **Buxton** on Drums
- 1 tsp “The Captain” **Chris Morgan** (Special Guest) on Tenor Saxophone
- 1 tbsp snipped **Jay** “Choo Choo Cha” **Moody** on Keyboards
- ½ lb grated **Kevin** “Now This Is” **Harcourt** on Trumpet
- 15 fl oz hot “Colonel” **Colin Mills** on Baritone Saxophone
- 23 stone of **The Doctor** on vocals

Interspersed with:

- 15 lean, prime cuts of Anglo-American Rhythm and Blues
- 2 kg (2 ¼ lb) Jump Jive
- A dash of Swing
- A pinch of Soul
- 1 level teaspoon each of Sweat, Alcohol and Happiness
- 1 bottle (750 ml) of The Blues
- 500g (1 lb 2 oz) Funk, thickly sliced
- Rock and Roll to taste
- Chopped Ska to garnish

Tickets: 01926 632575 or 632664 or email sueateathorpe@gmail.com

£10 / £9 (o-65s, u-18s) if purchased before 21st

£12 / £11 (0-65s, u-18s) if purchased after 21st.



Summer Term Community Courses

Most classes commence week beginning Monday 15th April. Evening courses run from 7.30pm-9.30pm for a maximum of 10 weeks, unless shown otherwise. There are no classes on Monday 6th May (bank holiday) and half term week beginning 27th May.

Please arrive 15 minutes early for the first session to allow time for enrolment. For further information and to register to guarantee your place, please contact Sue Hawthorn or Chris Dudley on 01926 810942 or at commed.s@welearn365.com

Southam College Evening courses beginning:

Monday 15th April 2013

Cake Decorating and Sugar Paste Flowers
Mandarin Chinese for Beginners (term 3) 7.00pm-9.00pm
Woodturning - Beginners - 6.30pm-8.00pm
Woodturning - Improvers - 8.00pm-9.30pm

Wednesday 17th April 2013

Summer Sizzlers - get cooking and make sweets and savouries with a summer theme (6 weeks) 7.00pm-9.00pm (starts 1/5/13)
Yoga for Beginners - term 3 - 6.30pm-7.30pm
Yoga - 7.45pm-9.15pm

Thursday 18th April 2013

Cake Decorating and Sugar Paste Flowers
Creative Sewing - 6 weeks
Dressmaking for Summer - 7.00pm-9.00pm (6 weeks)
Family History Research - 7.00pm-9.00pm (6 weeks)
Pilates - 7.00pm-8.00pm

Daytime Courses in Southam Graham Adams Centre:

Fitness, Fun and Flexibility - Wednesday 9.30am-10.30am
Water Colour Painting - Wednesday 1.00pm-3.00pm
Water Colour Painting - Thursday 1.00pm-3.00pm
Water Colour Painting - Friday 1.00pm-3.00pm

Courses in the villages:

Bishops Itchington Community Centre

Cake Decorating - Monday 7.30pm-9.30pm

Tom Hauley Room Harbury

Yoga - Wednesday 7.00pm-9.00pm

Offchurch Village Hall

Upholstery and Soft Furnishing - Tuesday 9.30am-11.30am (6 weeks)

Stockton Village Hall

Upholstery and Soft Furnishing - Tuesday 1.00pm-3.00pm

Ufton Village Hall

Pilates - Monday 9.30am-10.30am

Cake Decorating and Sugar Paste Flowers - Tuesday 10.00am-12.00noon

Programme subject to amendment. For the most up to date information and a short description of most of these courses please contact us or visit our website www.southamcollege.com and follow the Community Education link from the homepage or under "About us" tab.

Course fees start from £4.00 per hour with some reductions available – please ask for further details

**Reading Circle**

The next meeting will be on Tuesday 30th April 2013, at the home of Liz Varnish, 20 Village Street, at 8.00pm. The book for April is *The Sugar Girls*, by Duncan Barrett and Nuala Calvi. If you would like to come along, you will be very welcome. For further information, ring Liz on 01926 886119.

Reading Circle members

The 58th annual Napton Horse Pony and Dog Show

Including qualifier classes for Equifest, The Side Saddle Association and The Veteran Horse Society.

May is nearly here, the days are getting longer and the weather warming up. There will soon be village fairs and fetes, gala days and markets and again, for the 58th year, the Napton Horse, Pony and Novelty Dog Show, will be held on Saturday May 25 2013. Holt Farm Southam will host the show by kind permission of P Davies.

Of course, you shouldn't be fooled by the name. As well as the horses, ponies and dogs that descend on the showground, there are plenty of other attractions and entertainments for all to enjoy. Displays in and out of the main ring in the past have included carriage driving, vintage tractors, the Warwickshire Foxhounds, the Guide Dogs display team, terrier racing, duck herding and this year promises even more to amuse the crowds.

Aside from the entertainments there are some fabulous foods on offer including Napton's own wonderful water buffalo burgers, and some interesting stalls and stands in the shopping village should you wish to purchase anything from a home made cake to a ride on lawn mower!

As well as being a fun day out, the show donates the money raised to local charities and causes. In previous years the show has money to the Napton War Memorial Fund, Myton Hospice, Galanos House, St Lawrence Primary School, Napton, the Warwickshire & Northamptonshire air Ambulance and 1368 (Warwick & Royal Leamington Spa) Squadron Air Training to name a few. We would like to say a big thank to all those who have come along and made this possible.

Back to the horses and dogs, there are classes for everyone to enjoy, from children to adults and from beginner to experienced. With horse classes including working hunter, mountain and moorland, family pony, championship classes and show jumping as well as qualifier classes for the Equifest, The Veteran Horse Society and The Side Saddle Association, and the dog show, the event really does cater for everyone. With rosettes, trophies and money prizes for some classes, there is even more incentive to join in. Coming early on in the season the show is a great opportunity to dust off those cobwebs and get the ponies out after winter, and also to give your young horses chance to gain valuable experience whether your chosen discipline is show jumping or showing.

The show is a great family day out that won't stretch the budget in

these troubled financial times. Competitors can contact 07899 916332 or naptonshow@live.co.uk if you would like a schedule and class bookings can be made in advance or on the day. The post code for the showground is CV47 1NB.

Novelty Dog Show

In association with Southam Country Stores

- Best Terrier type Dog or Bitch
- Best Gundog type Dog or Bitch
- Best Working type Dog or Bitch
- Best Utility or Hound type Dog or Bitch
- Best Long Coated Dog or Bitch
- Best Short Coated Dog or Bitch
- Best Young Handler (under 14 years)
- Best Veteran Handler
- Best Veteran Dog
- Best 6 Legs
- Best Condition
- Dog in Fancy Dress

Parade of Dog Show Rosette winners later in the afternoon

All Classes £1.00, Rosettes 1st - 4th, Judging to commence at 2.00pm

Come along and join the fun and don't miss out on what promises to be another great day out. We look forward to seeing you on 25th May 2013!

Remember the Kids'

Corner!!!!

**Why don't you send in a picture,
poem, story, game or joke?**

**Deadline for the May issue is
Friday 19th April. Thank you!!**



Volunteer Car Drivers Needed

Want to do something great in 2013!!
Warwick Health Transport gives the opportunity to:

Meet new and interesting people

Work with a great team

Positively change the lives of people living in your local area

The Service needs local volunteer car drivers in your area to join our team. You must enjoy socialising with a wide range of people, own your own car and be reliable and trustworthy.

Drivers use their own cars to take older people in the Warwick District to a variety of medical appointments.

All expenses are reimbursed. You drive as much or as little as you wish depending on your circumstances.

MAKE A DIFFERENCE contact Back & 4th
Tel 01789 471595