

Offchurch News

The Village Magazine

July / August 2013



Foxgloves



Offchurch News deadline: 17th August 2013
 All notices for next issue to offchurchnews@gmail.com or Nine Hills Cottage, Welsh Road by this date at the latest. Thank you.

July 2013

Mon	Tue	Wed	Thu	Fri	Sat	Sun
1 	2 	3 氣功 	4 Leamington Pilates 	5 	6	7
8 	9 Offchurch CAMEO	10 氣功 	11 Leamington Pilates 	12 	13 	14 S
15 	16 	17 氣功 	18 Leamington Pilates 	19 	20	21
22 	23	24 氣功 	25 Leamington Pilates 	26 	27	28
29 	30 	31 氣功 				

Village Hall Cleaning for July: Wendy Farquharson and Sharon Warden



Grey bin collection



Green bin collection



Mobile Library **Tudor Cottage 9.35am - 9.55am**
Old Post Office 10.00am-10.20am



Bell ringing practice, 7.30pm-9.00pm, Church Tower



Services in St Gregory's Church p. 7;
p.12

S

Sunday School, St Gregory's Church p. 5



Family Service, St Gregory's Church p. 5



Offchurch Sunday Funday Afternoon, 3.00pm-5.00pm, Village Hall p. 10



Upholstery and soft furnishings class, 9.30-11.30am, Village Hall



Afternoon Club, Strawberry Tea, 2.30pm, Village Hall p. 21



Village Hall Committee Meeting, 7.30pm, Village Hall p. 20



Cameo, 7.30pm, meet outside Village Hall for walk p. 18



Offchurch Crafts, 7.30pm, Village Hall p.17



Offchurch Garden Club, 7.00pm, evening visit p. 16



Tennis Club Night (Thurs); Cricket (Sun), Netball (Mon) times vary, Offchurch Sports Club p. 9



Churchyard Working Group, 9.30am-12.30pm, Churchyard pp. 11-12



Reading Circle, 8.00pm, private home p. 16



Offchurch Croquet Club, Village Field, 5.00pm



Qigong class, 5.00pm-6.00pm, Village Hall



Pilates classes at 12.15pm, 5.45pm and 7.00pm, Village Hall



Warwickshire Open Studios, times vary, St Gregory's Church p. 19



Offchurch News deadline: 17th August 2013

All notices for next issue to offchurchnews@gmail.com or Nine Hills Cottage, Welsh Road by this date at the latest. Thank you.

August 2013

Mon	Tue	Wed	Thu	Fri	Sat	Sun	
			1 Leamington Pilates Sports Club	2	3	4 Sports Club	
			5 Sports Club	6 Sports Club	7 氣功 of 30mg Sports Club	8 Leamington Pilates Sports Club	9 Sports Club
10 Sports Club	11 Sports Club	12 Sports Club	13 Offchurch CAMELO	14 氣功 of 30mg Sports Club	15 Leamington Pilates Sports Club	16 Sports Club	17 Sports Club
18 Sports Club	19 Sports Club	20 Sports Club	21 氣功 of 30mg Sports Club	22 Leamington Pilates Sports Club	23 Sports Club	24 Sports Club	25 Sports Club
26 Sports Club	27 Sports Club	28 氣功 of 30mg Sports Club	29 Leamington Pilates Sports Club	30 Sports Club	31 Summer		

Village Hall Cleaning for August: Judith Perry



Grey bin collection



Green bin collection



Mobile Library

Tudor Cottage 9.35am - 9.55am
Old Post Office 10.00am-10.20am



Bell ringing practice, 7.30pm-9.00pm, Church Tower



Services in St Gregory's Church

p. 7;
p. 12

S

Sunday School, St Gregory's Church

p. 5



Family Service, St Gregory's Church

p. 5



Cameo, 7.30pm, Village Field

p. 18



Offchurch Crafts, 7.30pm, Village Hall

p.17



Offchurch Garden Club, 7.00pm, evening visit

p. 16



Tennis Club Night (Thurs); Cricket (Sun), Netball (Mon)
times vary, Offchurch Sports Club

p. 9



Offchurch Summer Fun Weekend, BBQ, 4.00pm, Village Field

pp. 13-15



Churchyard Working Group, 9.30am-12.30pm, Churchyard

pp. 11-12



Reading Circle, 8.00pm, private home

p. 16



Offchurch Croquet Club, Village Field, 5.00pm



Qigong class, 5.00pm-6.00pm, Village Hall



Pilates classes at 5.45pm and 7.00pm, Village Hall

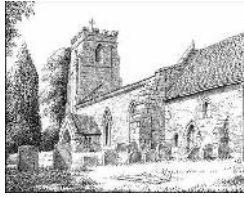
From the Vicarage

The other day we had a visit from a cousin of mine, who, like me, is an ordained minister in the Church of England. Unlike me, he is also a professor of clinical psychology in the University of Oxford, based in the Oxford Mindfulness Centre. One of the books he has written has the title, 'Mindfulness: A Practical Guide to Finding Peace in a Frantic World'; and during his time with us he explained a little about what that meant, and how it was being applied in situations ranging from industry to primary school classrooms. He shared how initially he was sceptical about how useful it was; as part of his research he practised the meditation technique every day for a period of time, but felt it didn't do anything for him – until he decided to stop doing it. Once he had stopped, and knew he no longer had to do it for his research, he found he wanted to do it for himself and became convinced of its value!

Peace in a frantic world is something many of us need. 'Summer' (whatever that word means) is holiday time for many of us, when we hope we can escape from the frantic world of our everyday lives and find refreshment and relaxation, maybe even peace. We hope that the different environment will do the trick. Too often we forget that the most important environment in which to find peace is our internal one, what goes on inside our heads and our hearts. Perhaps, this summer, we could pay attention to that, too.

I was interested to hear how my cousin discovered the value in something only after it had stopped being a duty. I was reminded how many people say they were forced to go to church or Sunday-school when children, or hated their RE lessons, and that put them off religion completely. I hardly ever went to Sunday-school, and my music lessons clashed with RE so I didn't do RE at school either, so I'm not the right person to judge; but I wonder how much the element of compulsion puts young people off religion. If you've been put off as a child, might it not be worth while revisiting Jesus and the Bible (especially the New Testament) as an adult? After all, on the night before he was crucified – and knowing what was about to happen – Jesus did say to his disciples, 'Peace I leave with you; my peace I give to you.' Peace in such a situation is a peace worth having, and worth looking for.

Tim Britton (01926 812518 or email tim@thefeldongroup.org.uk)



July Church Diary and Rota

7 th	10.00am	Matins	Liz Varnish & Graham Douglas/Wendy
10 th	8.00am	Holy Communion	David
14 th	10.00am	Holy Communion with Sunday School	David/Wendy
21 st	10.00am	Family Service	Marcia
28 th	10.00am	Holy Communion	David/Wendy

August Church Diary and Rota

4 th	10.00am	Matins	Jo King + team/Wendy
11 th	10.00am	Holy Communion with Sunday School	Tim/Wendy
14 th	8.00am	Holy Communion	Tim
18 th	10.00am	Family Service	Marcia
25 th	10.00am	Holy Communion	David/Wendy

Also, Evening Service every Thursday at 5.00pm for 30 minutes. See page 12 for further details.



ST GREGORY'S MATTERS



Sunday Munch: Food, fun and fellowship, boosted by the first hints of summer weather, ensured that our Trinity Sunday "Bring and Share" picnic lunch was a congenial occasion. Any report unashamedly warrants the use of that well-worn Parish Magazine cliché ... *"a good time was had by all"*.

Offa House lawn provided the perfect venue ... poignantly, a privilege that may not be around for much longer ... could this be our final Offa?

Spooky: Our Thursday evening service was nicely underway when, with uncanny timing, the light fuse tripped and we were instantly "gloomed". Unruffled, we quietly paused, allowing our eyes to adapt, until we were able to discern the next phrase on the service sheet ... *"Lighten our darkness ..."* You couldn't make it up!

A Summer's Afternoon, 9th June: Thanks to Richard's resourcefulness, St Gregory's resounded to the music of the talented and versatile Circle Singers who entertained an appreciative audience with a variety of pieces by composers ranging from Elgar to Flanders & Swann. (*"A regular army of hippopotami"* ... an absolute gem!)

Later, following tea and cakes, they provided the choral setting for a traditional Evensong Service. We revelled in the adulation of the *Magnificat*, and were encouraged by the comforting sentiments of the *Nunc Dimittis*, not to mention evocative words from the most inspiring of all evening hymns ... *"The sun that bids us rest is waking our brethren 'neath the western sky"*. Tell you what – all this begs the "Oliver reaction" ... *"Please sir, we want some more!"*

Somewhere in excess of £200 was raised during the event - a rewarding start for our kitchen / toilet fundraising initiative. Thank you "Circle" for giving your time and effort on our behalf.

Visitor: There must have been, over the years, many notable visitors to St Gregory's. Probably none, however, can out-fame **Philip Larkin** - arguably, the most famous post-war (non Laureate) English poet. Larkin spent his early life in Coventry, from where he would regularly cycle out to Offchurch, propping his bike inside the St Gregory's porch, before dropping down inside to cool off (well, he had just Sturmey-Archered up School Hill, apparently in a collar and tie ... and that raincoat!).



It is following his experience on such a visit that he was prompted to write "**Church Going**", one of his most acclaimed poems. Quite naturally, St Gregory's people who are not acquainted with it may be curious and want to take a look, but be aware that the words are those of someone who did not believe in God, or religion, for that matter.

Selected early lines

"I step inside, letting the door thud shut. Another church: matting, seats and stone, And little books; sprawling flowers, cut" ... "Up at the holy end; the small neat organ" ... "Hatless, I take off my cycle-clips in awkward reverence" ... "Move forward, run my hand around the font, From where I stand the roof looks almost new ...".

The immediate frisson of anticipation that may be aroused by his introduction, however, soon subsides, as Larkin's narrative explores, but fails to understand, the attraction of religion. Much of his time is spent in a sort of elongated, somewhat tortuous "Hamlet moment" ... *"to be (lieve) or not to be(lieve), that is the question"*. Perhaps, more reassuringly, he does go on to make it clear that he couldn't imagine a world where God did not exist, identifying the dilemma between faith and scepticism, finally concluding that mankind has an innate need to believe in something greater than themselves. A good starting point, at least, for a much deeper discussion.

Before leaving St Gregory's Larkin paused to write in our Visitors' Book, and he donated an Irish sixpence - which is encouraging - but did he fill out a yellow envelope?

Offchurch News takes a break: Quite deservedly, Offchurch News Corp Executive is taking the French approach to August. Summer holidays, anyone? – Enjoy!

We're All Going on a ...

Lanzarote, Westward Ho!, Isle of Wight or Greece,
Costa This or Côte-de-That, Benidorm or Nice,
Candy floss and "kiss-me-quick", marinas, piers, regattas,
Whoop it up, but don't forget ... **St Gregory's still Matters!**

David Varnish

Offchurch Sunday Funday Afternoon



St Gregory's invites all children and parents to an afternoon of games and activities including messy and creative crafts, cookery and a Wii. Followed by hot dogs.

**7th July 2013 3.00pm-5.00pm
in Offchurch Village Hall**

Suitable for all ages! Everyone welcome!

Parents are welcome to stay to join in, to help or just to watch or why not pop across to the church to see the art and crafts on display as part of the Warwickshire Open Studios. Come back to join us for a cup of tea.

For catering it would be useful to know numbers but not essential. Contact jane_inman@sky.com or 01926 338704.

We hope this afternoon will provide an opportunity for children in the village to get to know each other and may pave the way for them spending more time together over the holidays. We will be trying to find out during the afternoon what they would enjoy doing so that we can provide further activities in the future.



St Gregory's - A Sanctuary for Wildlife

*A shower of rain in July, when
the corn begins to fill,
Is worth a plough of oxen, and
all belongs theretill.*

*Much thunder in July injures
wheat and barley.*

These are more subtle observations than first meets the eye. A shower means rain and sunshine - the perfect weather blend for July corn. The second maxim mentions thunder, which means heavy or violent showers that can flatten whole fields of corn with terrific falls of rain and hail.

Now did you expect two bites of the cherry this month? That's what you get for here come August's sayings:

*It is always windy in barley
harvest; it blows off the heads
for the poor.*

A poetic ditty, possibly with a religious flavour, forgiving the stormy weather in August, which causes barley damage by compensating the needy poor.

Now the weather patterns are for July westerlies with some rain for the first week, then a mid-month dry warm period, and the last week returning to thundery cyclonic weather into August, followed by a bit of a mix until about the 20th when storms follow. This year will be different, I'm sure, with good weather for the children's holidays. You see!

In the churchyard last month, we saw nature do its catching up trick, everything just took off. We hardly kept up with the grass, but I was very pleased with the end of May and June flowers. I do hope you managed a look in the short fine spell last month. I shouldn't moan, but I wish the cow parsley didn't do so well, it does take over, particularly in the "woodland grass" area. As I mentioned before, I'm sure the wet weather last year has helped the growth in the churchyard, for each season so far this year has been remarkable.

You may not know that we have had trouble starting some of the mowers recently, but Paul, now recovered, has been a star. He takes the poorly mower home and gives it a good talking to and hey presto, away it goes. Thanks Paul. A big thank you to Richard for supplying engine oil for our machines. Enough for ten years, I reckon. I think he

struck oil in his garden. Thanks Richard.

Champagne and strawberry time again, *Tempus fugit* what? A lovely day coming up. Sunday 21st July, do make a note in your diary, 12.30pm until 2ish, tickets £7.00. Do give me a call. Wine and lunch all for seven pounds, what a bargain. I always welcome the lunch because about this time, the grass growth slows, hooray.

It still needs cutting however, and we will be there: Saturdays, 13th and 27th July; also 17th and 31st August, 9.30am until 12.30pm. Crumbs, it's nearly September.

Thanks again to one and all and just a little reminder, we are in our eighteenth year, who would believe it?

Mike Porter

Monthly prayer to Weekly prayer



The prayer group meeting at The Osier on the first Wednesday evening of each month has been running for a year. Going forward, it is now becoming part of the regular 5.00pm Praise and Worship Service held in St Gregory's every Thursday. For this service, we meet at the back of the church in a more informal setting. The praise and worship, including prayer, lasts for about 30 minutes. Our prayer time varies in content but always contains prayer for God's blessing and support for Offchurch and its people.

If you would like prayer for something specific, someone to talk to, or help in some way please contact offchurchchristians@gmail.com, or leave a message in the purple folder at the back of the church.

St Gregory's is a warm, loving, welcoming fellowship. We are more than happy for you to join us at any of our services, and particularly this short, informal one.

Susan Denning

Offchurch  Fun Weekend

Village BBQ

**Saturday 31st August 2013
4.00pm till late**

A great event for all ages

Come and enjoy a summer barbecue on the village field!

Please buy your tickets early – it helps to know how many people are coming and it is cheaper for you! (price details on pp. 14-15)

We need your help from 2.30pm on Saturday 31st to:

- **set up tables and chairs. If you have chairs, please bring them along.**
- **put up gazebos. If you have one, please bring it along and help put it up.**
- **put your name down on the rota to help run the licensed bar which opens at 4.00pm.**

Also, if you would be able to prepare a salad, please contact Janet on 425430.

For the barbecue, a vegetarian option will be available.

There will be a licensed bar, so there is no need to bring your own drinks or glasses.

Please bring along a raffle prize if you can! Proceeds from the raffle will be donated to Cancer Research UK.

**Thank you very much in advance for any help you can give.
See you there!**

Social Events Group

More details of the Summer Fun Weekend on pp.14-15!!!!!!!

Offchurch *Summer*

Village BBQ

on the village field
Saturday 31st August 2013
4.00pm till late



Traditional children's games from 4.00pm

Barbecue from 5.00pm (vegetarian option available)

Licensed Bar

Raffle (proceeds in aid of Cancer Research UK)

Music – acoustic jam throughout the evening. Stay and listen or bring your own instrument to join in. Some instruments will also be available for you to have a go at!

Tickets available from Janet 425430 or Liz 886119

£8.00 adults, £3.00 children under 12 in advance

£9.00 adults, £3.50 children under 12 after 24th August

Further details to follow – watch out for a f



Fun Weekend

A Musical Trifle

at St Gregory's Church
Sunday 1st September 2013
3.00pm

An informal miscellany of music and verse to entertain all ages at 3.00pm, with contributions from: St Gregory's Trio, visiting musicians and village children.

Afternoon tea and cakes to follow



For more details contact Wendy Green 427580 or
Wendy Farquharson 612279

Free Entry (donations towards church funds)

flyer coming through your door in August.



Dear Offchurch

A big thank you to you all - firstly the intrepid collectors and then you, the envelope filler. (Cash cheques and CAF vouchers). You created the total of £315.61.

Then, to follow that, you added another £360 at the Jazz Concert in St Gregory's, making your total £675.61. What can I say? Oh yes, I did have a super Birthday too.

Thanks, you are so supportive.

Mike Porter



Reading Circle

Our next meeting will be on 30th July 2013, 8.00pm at the home of Kate Sargent, Corner Cottage, School Hill. We will be sharing our thoughts on *The Light between Oceans*, by M L Stedman. At this meeting, there will also be a Lucky Dip so each member will be taking away a different book to read. We will reveal and share our views on these books at the meeting on 27th August, which will be at the home of Judith Perry, 21 Village Street. All the Lucky Dip books will be selected from the Big Red Book Box.

If you would like to come along, you will be very welcome. For further information, ring Liz Varnish on 01926 886119 or email ldvarnish@gmail.com

Reading Circle Members



Offchurch Garden Club

On Monday 15th July, there will be an evening visit at 7.00pm to Angie and Martin Woodhouse's garden, 5 Birdingbury Road, Marton, Rugby CV23 9RY

On Monday 19th August, there will be an evening visit at 7.00pm to Kings Hill Nurseries, Kings Hill Lane, Coventry CV3 6PS

For further information, please contact Mo Chivers on 01926 613477 or e-mail mo@crisford.net.



Offchurch Crafts

Tuesday 16th July 2013
7.30pm in the Village Hall

The theme for this month's meeting is design. Judith will show how she develops a design from the initial idea - through research, rough sketches, decisions, samples - to the finished piece of work. As we are embarking on a new round of Altered Books, this might be useful for anyone who needs some help getting started on the "altered pages" for their book. So please bring along your books, along with any ideas you have.

If you are not working on an Altered Book, please bring your crochet, stitching, knitting or any other craft project.

Offchurch Crafts

Tuesday 20th August 2013
7.30pm in the Village Hall



This month we will be discussing the future programme for the group.

If there are specific areas you are interested in pursuing or developing, let's try and build those into the programme.

Everyone is welcome (Subscription to the Group is £10 for six months or £2.50 for a single session).

Judith Perry and Janet Seaton

For further information, please ring Janet on (01926) 425430.

Welcome

A warm welcome to Jo and Dan, who have moved into The Lodge. We hope that they will be happy living in Offchurch.

Offchurch
CAMEO

Tuesday 9th July 2013

The July meeting will take the form of a walk-about round some **Offchurch gardens**.

We will start at the Village Hall at 7.30pm and finish at 21 Village Street for a glass of wine and nibbles.

If the weather is unsettled, bring an umbrella – but if very wet you will be welcome to come to 21 Village Street for a drink anyway.

All welcome – charge for visitors is £2

Judith Perry

Offchurch
CAMEO

Tuesday 13th August 2013, 7.30pm

Village Field

Cameo will be meeting at 7.30pm on the village field for a friendly game of golf croquet followed by a glass of wine. If it is wet, we will play bowls in the village hall. Everyone is very welcome.

Jane Hedderwick



warwickshire open studios

St Gregory's Church is a venue for one of Warwickshire's Open Studios exhibitions

From Saturday 29th June to Sunday 14th July
Mon, Wed, Thurs, Fri, Sat 10.30am – 4.30pm
Tuesdays 10.30am – 7.00pm
Sundays 1.00pm – 4.30pm

Table service for tea and cakes each Saturday and Sunday during the event, from 2.00pm to 4.30pm.

Work by four artists will be exhibited and will include:
photography, prints, mixed media artwork and textiles

Variety of artwork plus small gift items and cards for sale

The artists will be there each day so please do drop in for a chat.

For further details please see
www.warwickshireopenstudios.org



Village Hall Notices

Village Hall Committee

The next meeting of the Village Hall Committee will be on **Monday 29th July 2013** at 7.30pm in the Village Hall.

Village BBQ

Come along to this successful village event. See separate notice on pp. 13-15 for further details!

Village Hall Cleaning

On the rota for July: Kate Sargent

On the rota for August: Judith Perry

Offchurch Village Hall

Available for hire

To check availability, visit:

www.offchurch.org.uk/village-hall

To make a booking or for more information:

07943 556133 or

villagehall@offchurch.org.uk

Offchurch 100 Club June Draw

The first draw of the new 100 club took place on Sunday 9th June 2013 after the morning service. The winners are as follows:

- 1st Prize Andrew Farquharson
- 2nd Prize Janet Seaton
- 3rd Prize Nadia Chalfin

Congratulations to our winners of the first draw.

We have succeeded in getting 100 names for the club so thank you to everyone who has supported it.

John Mander



 **Afternoon Club**
The Afternoon Club invite you to a
Strawberry Tea
in the Village Hall
on Thursday 11th July
from 2.30pm
Admission £3.00

Includes tea, Bring and Buy stall and raffle.

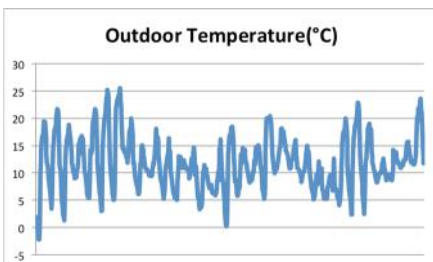
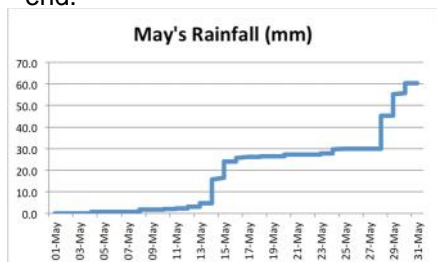
This is our fundraising event and we look forward to seeing you in July. For further information, please contact Greta (01926 429990) or Valerie (01926 423677).

We do not meet in August.

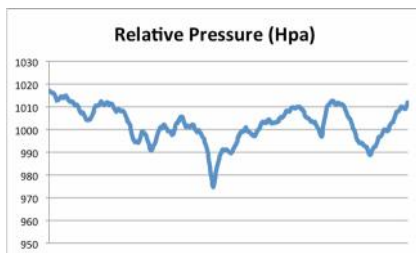
Offchurch Weather Watch - May 2013

May was an average month for rainfall in Offchurch. 60.3 mm of rain fell, which is very close to our monthly average of 61.4 mm. That said, this is a very variable month with values over the past eight years varying from 28.5 mm in 2004 to 102 mm in 2006. Despite it being a very wet summer, last year's rainfall was 57 mm. You will notice that we had two longish dry periods with two wet spells in the middle and again at the end of the month.

Warmer weather finally arrived, thankfully, with daytime temperatures exceeding 25°C at the end of the first week but dropping significantly by the middle of the month and only rising again briefly towards the end.



Notice how the two periods of low pressure (below 990 hPa) correspond approximately with the two periods of rainfall. It was also a dull month and indeed the first five months were the dulllest since 2006 which was, by chance also the wettest.



Weather history and Culture – The effects on battles

Weather has altered the course of history due to the effects it has had on military campaigns. A disastrous attempt by Julius Caesar in 55 BC to invade our shores was thwarted by strong north-westerlies (he was successful a year later). The lack of winter preparation by Hitler's army when attempting to invade Russia allowed the Russian troops to re-group and commence a counter-offensive. One of the most significant disasters followed the defeat of the Spanish Armada in 1588. Retreating from Drake's naval forces around the north of Scotland, many of the Spanish galleons were wrecked by a deep depression which brought strong winds and very high winds. Many hundreds of sailors were drowned.

RKS

CONTRACT FOR CSW BROADBAND DELIVERY IS ANNOUNCED

The following statement has been released by the Coventry, Solihull and Warwickshire Broadband consortium regarding improvement to broadband services across the area. – RKS

After a lot of hard work on the part of the project team and the Local Broadband Champions, CSW Broadband has agreed a £14.57m deal with BT that will bring superfast broadband(24Mbps or over) to 91% of the area. The remaining 9% will achieve speeds of a minimum of 2Mbps up to 23.9Mbps. That means that everyone should be able to engage in activities such as online banking and shopping, watching BBC iPlayer and carrying out free video-conferencing using Skype.

Businesses will be able to compete in a global market place, and employees will be able to work from different locations – or from home. For many in the more rural areas, this will be a real step-change and will give greater flexibility in the way that people choose to live their lives, to work or to spend their leisure time.

Now that the contract has been let, BT will commence on-the-ground survey work and a rolling 12-month programme will be announced, with the first installations expected around the turn of the year.

Because of the wealth of data that was provided by the Local Broadband Champions and members of the public, the project team was able to negotiate an additional £750,000 funding, which will help to extend the superfast broadband reach still further.

Although 91% of homes and businesses will receive superfast broadband within the next three years, which is a significant achievement, it is recognised that this project is a stepping stone to the European targets for 2020 which state that all premises should be connected at a minimum of 30Mbps and 50% of premises at 100Mbps. This will be a major undertaking given that the current targets are extremely challenging. Additional government funds are proposed in the future to enable this to happen and the aim is to increase the fibre footprint as soon as money is available.

Until the physical surveys are completed by BT for each area it will not be possible to say exactly what will be going where, or when, but all information will be given on the project website <http://cswbroadband.org.uk>

We have organised a series of launch events to explain the project more fully and to give you an opportunity to ask questions. These will

be held in each of the Warwickshire Districts and will be held in the evening to give everyone the best chance of attending. If you can't make it to a meeting in your local area and are prepared to travel then please feel free to attend a different one. All meetings open at 6:30 for a prompt start at 7.00pm:

Thursday 11th July Warwickshire County Council, Shire Hall, market Square, Warwick, CV34 4RL

Tuesday 16th July Stratford District Council, Elizabeth House, Church Street, Warwick, CV37 6HX

STOP HS2

STOP HS2

STOP HS2

HS2 – CONSULTATION ON THE DRAFT ENVIRONMENTAL STATEMENT

We are now in the middle of this consultation. The finalised Environmental Statement (ES) will contain the details about the route of HS2 which will go into the Hybrid Bill which would give legal authority to government to build it. The information which has been produced by HS2 Ltd for the consultation also contains information we have not seen before. So this is an important consultation.

However, as those people who attended the Roadshow in Cubbington or our drop-in session in Offchurch will know, there is much to concern us, for example:

- None of our main mitigation proposals, especially those to keep the track bed as low as possible to minimise noise and visual impact, and our proposed green tunnel, have been accepted by HS2. Indeed, the track height has consistently been raised (to save money). As a result the impact of HS2 will be much worse than it need be.
- There will be very significant noise impacts across the parish, especially but not only close to the track. This is obscured by the

maps produced by HS2 Ltd, which show “average” noise over the daytime and night-time periods, including time when no trains are passing. This is of course much lower than the actual noise made by a train. Much of the parish may therefore be affected by significant noise impact. At night, light pollution will also be a problem.

- Severe disruption from construction will occur over a long period from 2017 to 2025. This will include noise and visual intrusion and disruption to traffic. Up to 830 workers will be employed in the local area (Offchurch and Cubbington), generating up to 1350 peak-hour two-way trips. Roads like Welsh Road and the Fosse Way are identified as construction routes.

MORE INFORMATION

You will find more information to help you respond on the Offchurch website – www.offchurch.org.uk

PLEASE RESPOND

Things like this should be of concern to everyone in Offchurch. Please respond to the consultation, telling the government and HS2 Ltd what you think. You can respond in several ways:

Online: Go to www.hs2.org.uk and find information and the response form

Response form: Download it from the website above or get it by calling 0300 123 1102

Email: Email your response to HS2DraftES@dialoguebydesign.com

Post: to FREEPOST RTEC-AJUT-GGHH, Draft Environmental Statement Consultation, PO Box 70178, London, WC1A 9HS

Responses must be made by 11th July 2013.

Offchurch HS2 Action Group

STOP HS2

STOP HS2

STOP HS2



Love Ballet
Dance Company

**Announcing the
New LoveBallet Studios!**

Insight Park, Welsh Road East, Southam CV47 1NE

2 Beautiful Dance Studios fitted out to the highest spec...

- Sprung Oak Wooden Dance Floors
- Oak Ballet Barres line the walls
- Floor to ceiling dance mirrors
- Spotlights to create ambience
- Air Con & Heating
- Comfortable waiting area
- Ample parking

**The largest and most diverse Dance School in Southam
now has its very own Studios.**

To book a **FREE TRIAL** or for more class info
please contact Miss Lorraine

Call Lorraine 07711 010404 - www.loveballet.co.uk - lorraine@loveballet.co.uk

Class Timetable

Mon	Baby Ballet 18mths+ 10.00am - 10.45am		LoveDance 14yrs+ (Commercial, Street Jazz, Contemporary) 6.30pm - 8.00pm					
Tues	Studio 1 Strength & Conditioning 11.15am - 12.00pm	Prima Ballerinas 3-4yrs 4.00pm - 4.30pm	Pre Syllabus Ballet 5-6yrs 4.30pm - 5.15pm	Pre-Primary Ballet 6-8yrs 5.15pm - 6.00pm	Primary Ballet 8-9yrs 6.00pm - 6.45pm	GCSE Dance 6.45pm - 8.45pm		
	Studio 2	Cheerleading (all ages) 4.30pm - 5.15pm		Grade 1 Tap 10-11yrs 5.15pm - 6.00pm	Grade 2 Tap 11yrs+ 6.00pm - 6.45pm	Adult Tap 6.45pm - 7.45pm	Zumba 7.45pm - 8.45pm	
Weds	Boogie & Bounce 2yrs+ 1.30pm - 2.30pm		Ballroom & Latin 3-5yrs 4.45pm - 5.15pm	Ballroom & Latin 6-8yrs 5.15pm - 6.00pm	Ballroom & Latin 9-16yrs 6.00pm - 6.45pm	Adult Ballet 6.45pm - 7.45pm	Ballroom & Latin Adults 7.45pm - 8.45pm	
Thurs	Zumba Over 50's 10.00am - 11.00am	Funky Dance 3-6yrs 4.00pm - 4.30pm	Gymnastics (all ages) 4.30pm - 5.00pm	Grade 1 Ballet 10-11yrs 5.00pm - 5.45pm	Funky / Modern 7-10yrs 5.45pm - 6.30pm	Grade 2 Ballet 11-13yrs 6.30pm - 7.15pm	Grade 1 Modern 11yrs+ 7.15pm - 7.45pm	Grade 3 Ballet 14yrs+ 7.45pm - 8.30pm
Fri	Mini Movers 0-5yrs 10.00am - 11.00am		Little Tappers 3-5yrs 4.45pm - 5.15pm		Pre-Primary Tap 6-8yrs 5.15pm - 6.00pm	Primary Tap 8-10yrs 6.00pm - 6.45pm		
Sat	Musical Theatre 4-8yrs 9.00am - 10.30am	Musical Theatre 9yrs+ 10.30am - 12.00pm	Grade 3 Ballet 14yrs+ 4.00pm - 4.30pm	Grade 4 Modern 13yrs+ 4.30pm - 5.15pm	Grade 4 Ballet 14yrs+ 5.15pm - 6.15pm			



AC WINDOW CLEANING

Regular, reliable and reasonable

Please call or email today for a quotation

References in Offchurch and
surrounding areas upon request

Telephone: 01926 258068

Mobile: 07588 681823

Email: alcwindows@gmail.com

Website:

<https://sites.google.com/site/acwindowcleanerscouk/>

Deadline for September issue:

17th August

**All notices to be delivered by then please
offchurchnews@gmail.com**

Nine Hills Cottage, Welsh Road

Come and join us for Cricket, Tennis and Netball !!

We are a small friendly local sports club, with good playing facilities and new clubhouse in lovely rural surroundings, and are keen to attract new players and families of all ages and abilities.



Cricket – Sunday Friendly Cricket for Adults and Youth, occasional or regular players. Please contact Guy Mander: 07779 644275 or Mark Swaby: 07774 645754

Tennis – two floodlit courts. Families, experienced players and beginners welcome. Clubnight is Thursday from 7.00pm. We are in Tennis leagues for both serious and friendly levels. Please contact Martin Shellard: 07986 573640

Netball – Training every Monday at 7.15pm at Offchurch Sports Club. We play in the Coventry and Warwickshire League. Adults and juniors of all abilities welcome. Please contact Katie Brazier 07770 965122.

We look forward to seeing you!!

Mark Swaby
Chairman